

Watchtower

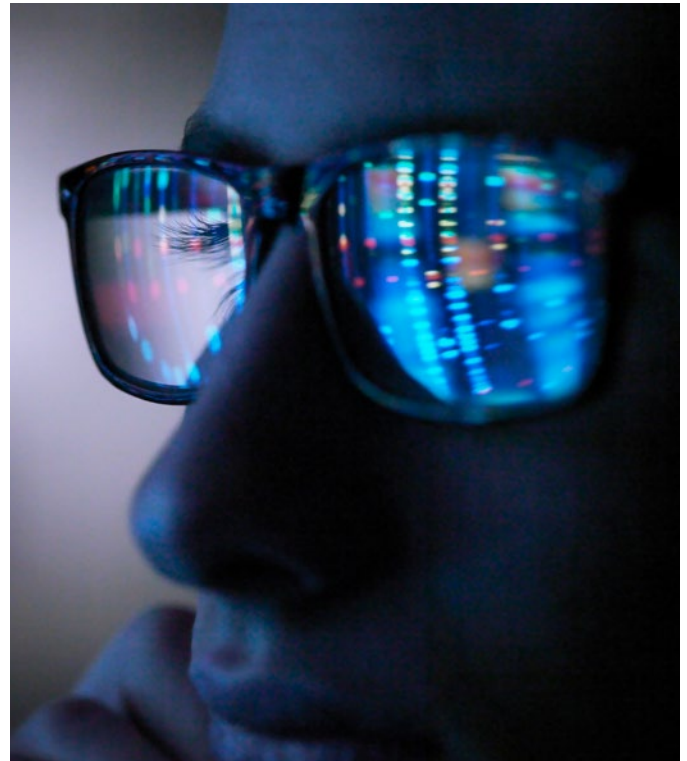
Actionable Intelligence to
Run Your Financial Institution

In partnership with Strategic Risk Associates (SRA), Fiserv introduces Watchtower, a powerful yet intuitive integrated risk and performance management platform that removes friction, cost and complexity for financial institutions. Watchtower delivers real-time insights for executives and the board while providing tactical guidance across the organization.

Combine enterprise risk management with governance and compliance into one top-to-bottom approach to managing risk and performance across the enterprise.

Drawing on SRA's deep industry and risk management experience, Watchtower is an easy-to-use solution that integrates and automates more than 60 data points from your Fiserv account processing platform and other systems.

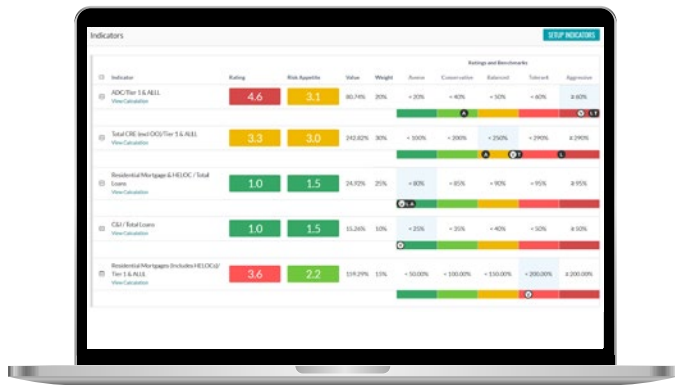
Watchtower continuously aggregates and normalizes all critical risk and performance indicators of your organization to provide executives the foresight needed to make strategic decisions. It also provides department-level users the insight to manage day-to-day risk of the organization.



Watchtower Enterprise Risk Management

Your institution's executives and board need a holistic view of the organization – including strategic, high-level risk management and reporting – to make insightful business decisions. Watchtower Enterprise Risk Management comes equipped with quantitative and qualitative key risk indicators (KRIs) and key performance indicators (KPIs) that measure against strategic targets, peer averages, policy limits and risk appetites. It helps you:

- Manage inherent, residual and actual risk in real time
- Leverage a risk-adjusted, forward-looking trend and profile analytics model in a single integrated platform
- Support the strategic and performance planning needs of the institution
- Automate and streamline routine activities



Watchtower Governance, Risk and Compliance

Your institution’s department-level users can monitor risks and controls down to the location, people and functional processes across the organization. Watchtower Governance, Risk and Compliance is a scalable, secure cloud solution that integrates with other systems through a comprehensive API. Key features include:

- Preloaded risks/controls, compliance frameworks and standard assessments
- Task assignments and key control execution for ad hoc control tracking
- Informative dashboards with downloadable dynamic reporting
- Active monitoring of cybersecurity risk
- Aggregated risk capabilities with exogenous risk modules



Key Benefits:

- Implement key controls and attributes
- Actively manage enterprise KRIs and KPIs to improve overall performance
- Deliver process improvements with trackable assignments and tasks
- Simplify multidimensional complex risks with searchable tags and filters
- Automate and streamline routine activities
- Leverage multilayer attributes with standard risk frameworks and tags for ad hoc assessments



Executives and Functional Staff Align on Key Risk Criteria

Watchtower weighs your selected risk tolerance levels in key categories against industry benchmarks.

Credit	Q1-2021	Q2-2021	Q3-2021	Q4-2021	Current Benchmark	Direction of Risk
cri.4 - Concentrations of Credit	2.4	2.9	2.8	2.8		→Stable
ADC/Tier 1 & ALLL	51.21%	81.08%	80.74%	80.74%	60% to < 100%	→Stable
Total CRE (excl OO)/Tier 1 & ALLL	209.34%	244.23%	242.82%	242.82%	200% to < 250%	→Stable
Home Equity Lines/Tier 1 & ALLL	54.67%	--	--	--	50% to < 100%	→Stable
Equipment Finance/ Total Loans	0%	0%	--	--	30% to < 40%	→Stable
Residential Mortgage & HELOC/ Total Loans	26.79%	25.42%	24.92%	24.92%	75% to < 80%	→Stable
C&I/ Total Loans	--	14.83%	15.26%	15.26%	20% to < 25%	→Stable
Residential Mortgages (Includes HELOCs)/ Tier 1 & ALLL	--	162.44%	159.29%	159.29%	150.00% to < 200.00%	→Stable
cri.11 - Economic Forecast	1.8	1.5	3.9	3.9		→Stable
Annualized GDP Growth Latest Quarter	3.2%	31.4%	-2%	-1.8%	0.5% to > 0%	→Stable
Annualized Changes in Housing Prices Latest Quarter	3.7%	2.9%	7.49%	6.49%	10% to > 5%	↑Increase
Unemployment Rate Latest Report	4.17%	3.5%	5.5%	5.5%	5% to < 7%	→Stable
cri.1 - Credit Risk Exposure	3.8	3.8	4.1	4.1		→Stable
Net LN&S/Total Assets	66.02%	71.08%	70.78%	70.78%	60% to < 75%	→Stable
Unfunded Commitments/Total Loans	22.24%	21.09%	25.04%	25.04%	20% to < 25%	→Stable
cri.2 - Growth Rates	1.6	3.1	3.2	3.9		↑Increase
Loan Growth TTM	-5.94%	4.31%	1.69%	6.69%	5% to < 7.5%	↑Increase
Loan Growth TTM - Floor	--	--	1.69%	6.69%	7.5% to > 5%	↓Decrease

Simple color-coded dashboards let you risk monitor and report on key risk changes.

Credit

Operational & IT

Interest Rate

Liquidity

Compliance

Strategic

Exogenous Risk

Reputational

Subcategories

Strategic Imperatives

CECL Qualitative Factors

Status: Data Entry in Process

Exogenous Risk

3.5

Q4-2021
Owners: None Added
Viewers: None Added

Direction of Risk
→ Stable

Previous Quarters:

04-2020 Q1-2021 Q2-2021 Q3-2021

3.1
3.4
3.4
3.5

Risk Appetite

3.0


Name	Quantity of Risk Mgmt	Quality of Risk Mgmt	Residual Risk	Risk Appetite	Direction of Risk
Geographic Risk	3.6	2.2	3.5	2.9	→ Stable
Sectoral Risk	3.6	3.1	3.5	3.0	→ Stable


Rating Legend

- Very Low 1.0 - 1.8
- Low 1.9 - 2.6
- Moderate 2.7 - 3.4
- High 3.5 - 4.2
- Very High 4.3 - 5.0

Connect With Us

For more information
about Watchtower:

 800-872-7882

 getsolutions@fiserv.com

 [fiserv.com](https://www.fiserv.com)

Fiserv is driving innovation in Payments, Processing Services, Risk & Compliance, Customer & Channel Management and Insights & Optimization. Our solutions help clients deliver financial services at the speed of life to enhance the way people live and work today.

Visit [fiserv.com](https://www.fiserv.com) to learn more.



Fiserv, Inc.
255 Fiserv Drive
Brookfield, WI 53045
[fiserv.com](https://www.fiserv.com)

© 2021 Fiserv, Inc. or its affiliates. Fiserv is a trademark of Fiserv, Inc., registered or used in the United States and foreign countries, and may or may not be registered in your country. All trademarks, service marks and trade names referenced in this material are the property of their respective owners. 983272 09/21

fiserv.